

## STUDY NO.: 01

### NAME OF THE STUDY: STUDY ON THE EXTERNAL MORPHOLOGY OF CRUCIFERAE/BRASSICACEAE FAMILY(A MUSTARD PLANT)

Bengali name: Sorisha

English name: Mustard

Scientific name: *Brassica campestris*

Family: Cruciferae/ Brassicaceae

**Habit:** An annual cultivated herb.

**Root:** Tap root system.

**Stem:** Erect, non-woody, cylindrical, slightly hairy, branched.

**Leaf:** Simple, alternate, irregularly lobed, exstipulate, amplexicaul, upper leaves entire and lower leaveslyrate, some leaves are petiolate and some leaves are sessile and cauline, reticulate venation.

**Inflorescence:** Recemose, typicalraceme.

**Flower:** Pedicellate, ebracteate, complete, bisexual (hermaphrodite), actinomorphic, hypogynous, tetramerous, cruciform, yellow in colour.

**Calyx:** Sepals-4 in two whorls, polysepalous, aestivation imbricate.

**Corolla:** Petals-4, polypetalous, each petal consist of limb and claw, cruciform, alternating the sepals. aestivation valvate.

**Androecium:** Stamens-6, free, tetradynamous (outer 2 short, inner 4 long), filament long, anther bi-lobed, basifixed, introrse.

**Gynoecium:** Carpels-2, syncarpous, ovary superior, unilocular initially but later stage bilocular by a false septum (partition) known as replum. Style short, stigma bi-lobed, placentation parietal.

**Fruit:** Siliqua

**Floral formula:**  $+ \overset{\nearrow}{\text{♀}} K_4 C_4 A_{2+4} \underline{G}(2)$

#### Family identifying characters:

- Herb with alternate exstipulate leaves
- Flower cruciform
- Sepal-4, imbricate
- Petal-4, valvate
- Stamens-2+4,tetradynamous
- Ovary usually 2-celled or 1-celled
- Fruit siliqua or silicula

#### Other species:

- i) *Brassica juncea*-Indian mustard (Rai)
- ii) *Brassica alba*-White mustard
- iii) *Brassica nigra*-Blackmustard
- iv) *Brassica napus*-Rape seed

#### Book references:

1. Botany for Degree Students, A. C. Datta
2. College Botany, H. C. Gangulee
3. Modern Practical Botany (Vol.-II), B. P. Pandey

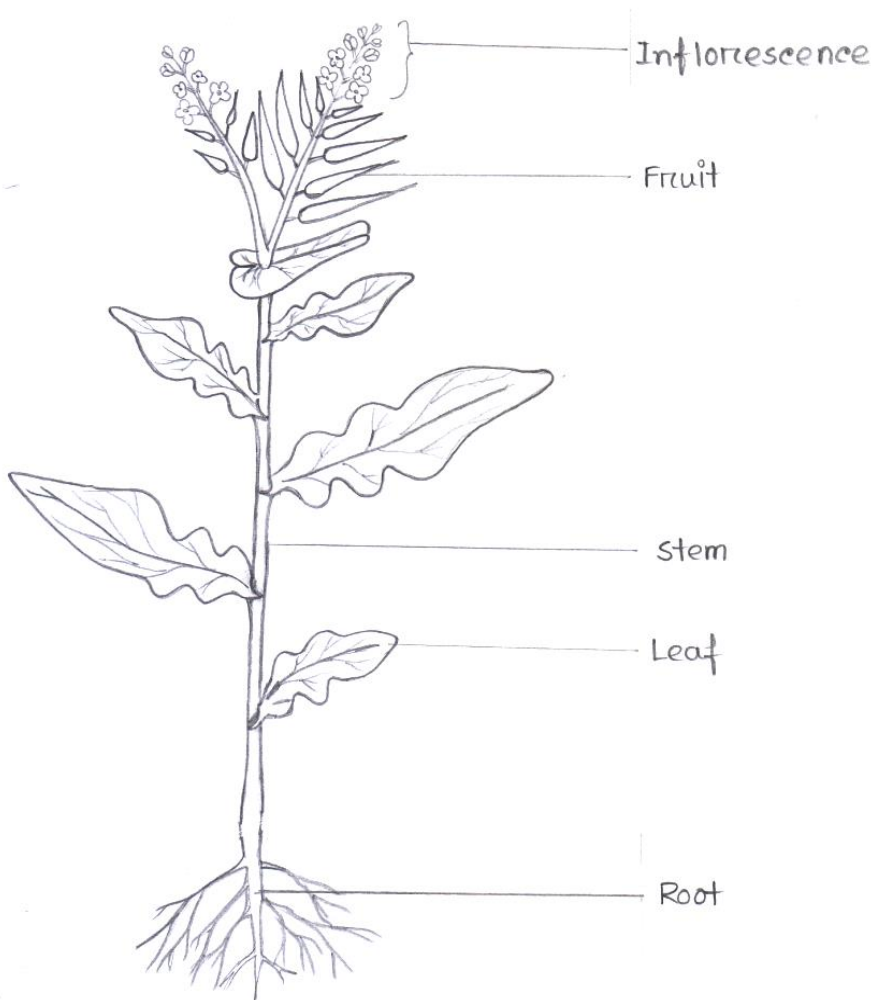


Figure : A complete Mustard Plant.

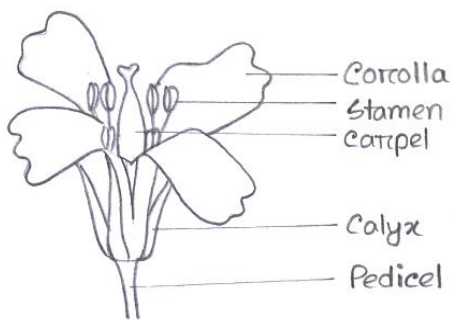


Figure : A mustard flower

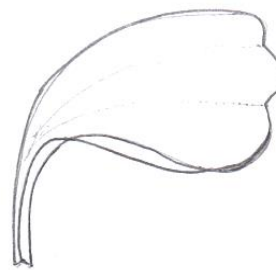


Figure : A petal

