

# GENERAL DIGESTIVE SYSTEM

- Consists of the organs related to reception, digestion and absorption of food and expulsion of unabsorbed materials.

**Broadly** organs of digestive system can be divided into:

- 1) Alimentary canal/ alimentary tube/digestive tube/GIT
- 2) Accessory organs/glands

**Alimentary canal** consists of the following consecutive segments:

- Mouth/oris
- Pharynx: common opening for both digestive and respiratory organs
- Esophagus
- Stomach
- Small intestine-Duodenum, jejunum and ileum
- Large intestine-Cecum, colon and rectum
- Anal canal/Anus

**Accessory organs are-** lips,teeth, tongue, digestive glands (salivary glands, liver and pancreas)

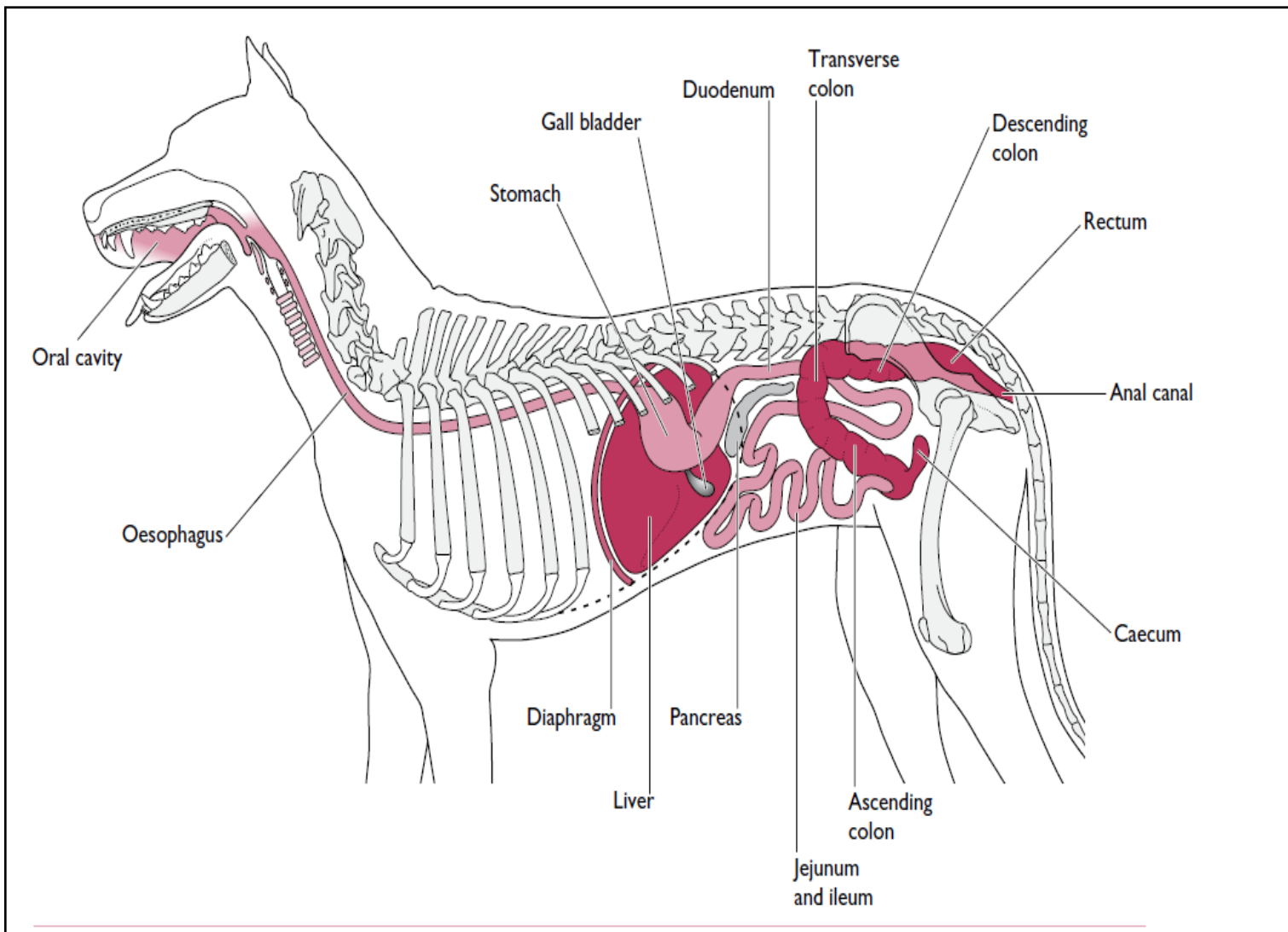


Fig. 1 Digestive system of dog; left lateral view